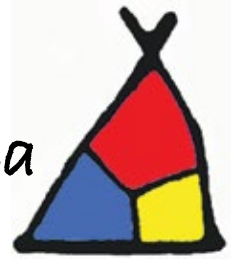


News from the Sami Cultural Center of North America

Winter/Dálvi 2018



Celebrate Sami National Day - Sámi álbmotbeaivi

The Sami Cultural Center continues our tradition of celebrating **Sami National Day** with an open house at the Center and special programming about Lapland at UMD. Sami National Day commemorates the first general meeting of Sami people gathering across national borders to discuss common interests, which took place in Trondheim, Norway on February 6, 1917. Sami National Day is celebrated with wearing of gakti, special concerts and cultural events, and displaying the Sami flag.



Open House & Exhibit Sámi Mánát * About Sami Children

Tuesday, February 6 * 4 - 6 pm

Sami Cultural Center

4915 East Superior Street, Suite 205, Duluth, MN

(visitors use the Pitt Street entrance)

The Open House will feature Special Children's Activities and introduce a new exhibit about Sami children through books, artifacts, and a discussion about duodji. The event is free and open to everyone!

exploring lapland

...a cultural landscape of global significance

Monday, February 12 * 7 p.m.

4th Floor Rotunda

Kathryn A. Martin Library

University of Minnesota Duluth



Dr. Thomas Beery, with the Minnesota Sea Grant Program, will present this informative program about Lapland in northern Sweden. The area was named a UNESCO World Heritage Site in 1996. The 3,600 square mile area contains 4 national parks and 2 nature reserves and is home to Indigenous Sami reindeer herders. Tom Beery has studied in the area for many years and is a specialist on the cultural landscape of Lapland.

We are pleased to partner with Kathryn A. Martin Library and the Royal D Alworth Jr. Institute for International Studies at the University of Minnesota Duluth to present this look at such an important area of Sápmi and the world. Everyone is welcome to this free program.



Sami Inspired Bracelet Workshop

Beat the winter blues and learn to make a beautiful Sami inspired bracelet using traditional Sami techniques with materials imported from Sweden — 4% silver thread, reindeer leather, shed reindeer antler button. New colors of blue, raspberry, and grey are available.

Class fee \$20 + materials fee \$45 - paid to instructor, cash or check. Additional kits will be available for \$45 each.

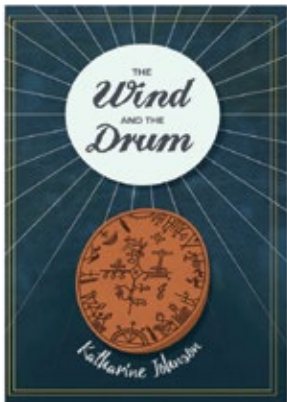
Instructor — Cindy Ericksmoen

Saturday, February 17 — 10 a.m. to 3 p.m.

Bring a bag lunch. Hot chocolate and snacks will be provided.

Class is limited to 10. To register or for more information, call Cindy at 218/340-6117 or email cynther301@yahoo.com

One Book Northland 2018



One Book Northland is an annual program of area libraries in which the entire community is encouraged to read the same book and engage in a community-wide dialog about the book. Other related events are also planned. This year the Sami Cultural Center is pleased to announce the libraries' selection of Katharine Johnson's new novel *The Wind and the Drum*, an adventure story set in Sápmi in 1690, as this year's read. There is a full schedule of Sami related movies, author programs, and book club discussions set for April 2018. The Center hosted a launching party for the book in October and we are excited to have the opportunity to educate the community about Sami culture and history through Katharine's book and the many events planned around One Book Northland.

Event Schedule for One Book Northland - All events in April 2018

- 4/9 - Movie - *Give Us Our Skeletons*, 6:30 pm, Duluth Public Library
- 4/10 - Book Club - *Wind and the Drum*, 6:30 pm, Cloquet Public Library
- 4/12 - Movie - *Yoik Fever*, 6 pm, Two Harbors Public Library
- 4/15 - Nordic Roots Sami Music with Arna Rennan, 10 am, KTWH, Two Harbors Community Radio
- 4/16 - Movie - *Sami Blood*, 6:30 pm, University of Minnesota Duluth
- 4/17 - Movie - *The Pathfinder*, 6:15 pm, Cloquet Public Library
- 4/19 - Book Club - *Wind and the Drum*, 1 pm, Two Harbors Public Library
- 4/19 - Book Club - *Wind and the Drum*, 6:30 pm, Duluth Public Library
- 4/19 - Nordic Roots Sami Music with Arna Rennan, 10 am, KTWH, Two Harbors Community Radio
- 4/21 - Author Event with Katharine Johnson with an introduction by Marlene Wisuri, Chair Sami Cultural Center, 11 am, Cloquet Public Library
- 4/23 - Author Event with Katharine Johnson & intro by Marlene Wisuri, 6 pm, Two Harbors Public Library
- 4/23 - Movie - *The Cuckoo*, 6:15 pm, Cloquet Public Library
- 4/24 - Main Author Event with Katharine Johnson and an introduction to the Sami by Marlene Wisuri, 6:30 pm, Fitger's Theater, Fitger's Complex, Duluth, MN with reception to follow at 7:30 pm.
- 4/28 - Genealogy Program, *You may be Sami if...*, Mary Lukkarila and Marlene Wisuri, 11 am, Cloquet Public Library
- 4/30 - Movie, *Suddenly Sami*, 6:15 pm, Cloquet Public Library

The Sami Cultural Center and *Báiki* are very grateful to many generous individual donors and the Barbro Osher Pro Suecia Foundation for ongoing support and encouragement.

News About Our Exhibits...

The Sami Reindeer People of Alaska exhibit has been on an exciting journey the last few months with more travel on the way. The historic photographs illustrating the story of the Alaskan Sami project were featured in the exhibit at the Ájtte Museum in Jokkmokk, Sweden, October 16 - December 16, 2017. The exhibit will now be traveling to different locations in Sápmi.



Imago Mundi Saminiatures opens in Italy!



Pictured at the opening of *Saminiatures* in Treviso, Italy, l to r: Lars Nordby, co-curator Nordic; Guja Mabellini, project coordinator; Marlene Wisuri, co-curator North America; Luciano Benetton, Imago Mundi founder; Tina Sovkina, co-curator Russia; Heidi Persdatter Greiner Haaker, artist and performer.

Govahallat ~ A Sami Cultural Center Exhibit

Artists have been working at the Sami Cultural Center on several workdays with another one scheduled for Saturday, February 10, 10 am to 2 pm. Artists working in any media are invited to visit the Center to reflect on tradition, gather ideas, and make art—up to three pieces to be exhibited. This is an opportunity for artists to make a creative statement using the resources of the Sami Cultural Center.

Contact the Center for more information about participating and the exhibit.

Govahallat ~ A Sami Cultural Center Exhibit

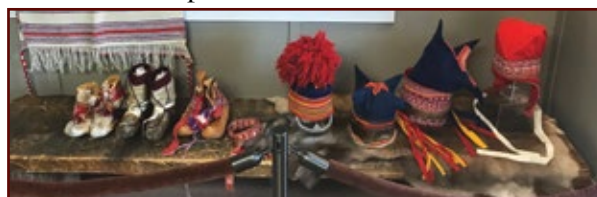
Robert Powless Cultural Center Gallery, AICHO, 212 W 2nd Street, Duluth, MN

May 24 - June 10, 2018

Opening Reception - May 24 * 5:30 - 7:30 p.m.



Alaskan Sami descendant Lois Stover and SCCNA Board Member Pearl Johnson pictured at the opening of the Kodiak Festival. Along with Lois' daughter Cherie Biddle, they presented a program at the Baranov Museum on the Sami and Alaska Reindeer Project.



Duodji in the *The Sami Reindeer People of Alaska* exhibit at the Baranov Museum in Kodiak, AK.

A panel discussion and reception marked the opening of the *Saminiatures* collection of the *Imago Mundi* project on October 28, 2017, in Treviso, Italy. Our North American Sami Community art collection was joined with the Sami collections from the Nordic countries and Russia for the exhibition and in the catalog of the exhibit.

Imago Mundi: The Art of Humanity is an exciting world-wide art project founded by Luciano Benetton and sponsored by the Fondazione Benetton Studi Ricerch as a way of collecting art from every country in the world and the peoples of the world and making it accessible to everyone at no cost. The collection can be viewed on the web site <http://www.imagomundiart.com>. Exhibition catalogs are available on the web site and a copy can also be seen at the Center.

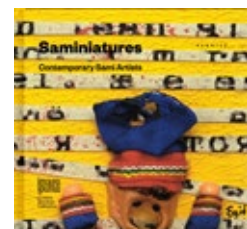


Photo by Vicki Lantto



The Sami flag was designed by Sámi artist Astrid Båhl based on an earlier design by Synnøve Persen. It was officially recognized in 1986. It represents the Sami people and not a geographical area. The colors are the ones often used in gákti—traditional Sami dress—and are called the Sami colors. The blue in the circle represents the moon and red the sun. The flag is flown on Sami National Day and a number of other special days.



We are often asked about membership opportunities at the Sami Cultural Center. We have preferred not to have a membership based on a structured system, so that everyone can feel welcome to participate in our activities without being tied to a membership. We do however appreciate and encourage those wanting to support the work of the Sami Cultural Center to contribute to our work and mission using the form below or the on-line donation process on our web site—www.samiculturalcenter.org. We so appreciate your donation in any amount made at any time and send grateful thanks to our many contributors!

GIITU ☀️ GIITU ☀️ MANY THANKS

Check out the Sami Cultural Center’s T-Shirt Shop at Big Frog T-Shirts, 5115 Burning Tree Rd, Suite 315b, Duluth, MN (near Best Buy) or order from this link ~

<https://www.shopbigfrogduluth.com/collections/sami-cultural-center>



One of four designs that can be made into t-shirts for adults or children, canvas tote bags, or other items.

Design by Laurel Sanders

And in California...

Watch for details on a Sami Siidastallan to be held during the Scandinavian Festival at California Lutheran University in Thousand Oaks, California, April 21-22, 2018. The Saami Siida of California and *Báiki* are extending an invitation to everyone to join them for a weekend of cultural sharing.

CONTACT INFORMATION

The Center is open on Tuesdays 3 - 7 p.m. or by appointment at other times. (Use the Pitt Street entrance when visiting the Center.)

Sami Cultural Center of North America
4915 East Superior Street, Suite 205
Duluth, MN 55804
email: samicenterna@gmail.com
phone: 218/525-4757
web site: www.samiculturalcenter.org
on Facebook at Sami Cultural Center

There are no membership fees, but your tax deductible and much appreciated gift to the Sami Cultural Center of North America will help fund the work of the Center.

Here is my gift of _____ to help with the work of the SCCNA.

NAME _____

ADDRESS _____

CITY, STATE, ZIP _____

PHONE _____ EMAIL _____

My employer will match this gift. Enclosed is the company’s matching gift form.

I prefer not to receive an appreciation award.

My gift is in honor of: _____

My gift is in memory of: _____

Please send an acknowledgment of this gift to:

NAME _____

ADDRESS _____

CITY, STATE, ZIP _____

Please send your contribution to ~
Sami Cultural Center of North America
4915 East Superior Street, Suite 205
Duluth, MN 55804

On-line donations can be made on our web site.